



Model: GX-LTS-13 load cell

Capacity	Accuracy	Part-Number
10 t	C3	GX-LTS-13-C3-10t
20 t	C3	GX-LTS-13-C3-20t
30 t	C3	GX-LTS-13-C3-30t
40 t	C3	GX-LTS-13-C3-40t
50 t	C3	GX-LTS-13-C3-50t
10 t	C4	GX-LTS-13-C4-10t
20 t	C4	GX-LTS-13-C4-20t
30 t	C4	GX-LTS-13-C4-30t
40 t	C4	GX-LTS-13-C4-40t
50 t	C4	GX-LTS-13-C4-50t

RoHS



OIML

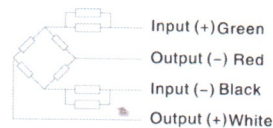
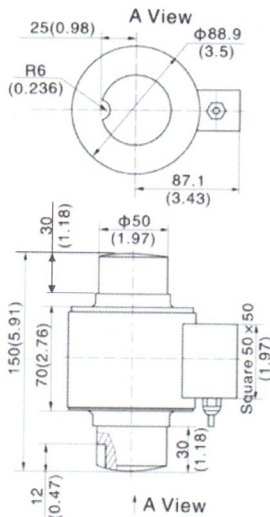
- Stainless steel IP68 compression load cell
- Hermetically sealed
- Suitable for vehicle and hopper scales and vehicle testing facilities
- Built in surge arrestors

Specification:

Accuracy class		OIML R60 C4	OIML R60 C3
Output sensitivity (= FS)	mV/V	2.0 ± 0.02 ⁽¹⁾	
Maximum capacity (E _{max})	t	10, 20, 30, 40, 50	10, 20, 30, 40, 50
Maximum number of load cell intervals (n _{LC})	n _{max}	4000	3000
Ratio of minimum LC verification interval Y = E _{max} / v _{min}	Y	8800	8800
Certificate number			
Combined Error	%FS	≤ ± 0.020	
Minimum dead load	t	0	
Safe overload	of E _{max}	150 %	
Ultimate overload	of E _{max}	300 %	
Zero balance	of FS	≤ ± 1.0 %	
Excitation, recommended voltage	V	5 ~ 12	
Excitation maximum	V	18	
Terminal resistance, input	Ω	700 ± 7	
Terminal resistance, output	Ω	700 ± 7	
Insulation impedance	MΩ	≥ 5000 (at 50VDC)	
Temperature range, compensated	°C	-10 ~ +40	
Temperature range, operating	°C	-35 ~ +65	
Element material		Stainless steel	
Ingress Protection (according to EN 60529)		IP68	

Note 1: The sensitivity is set in such a way that there is a standard current (SC) to obtain easier corner correction.

Outline Dimensions in mm (Inch)



Wiring:

Adopt shielded, 4 conductor cable: φ5mm
Standard cable length: 18m

Vahy Pro Nr 2013.02 Gravex GX-LTS-13 Rev 0



Doc no **8355/0-01**
Page 1 of 1